



# DSU 56/64 and DSU 5600

## DDS CSU/DSU

### Product Features

- Provides cost-effective method for termination of DDS services
- DSU 56/64:  
V.35 DTE interface
- DSU 56/64:  
Synchronous operation at 56 or 64 kbps rates
- DSU 5600:  
EIA-232 DTE interface
- DSU 5600:  
Synchronous 56 or 64 rates; asynchronous rates from 1.2 to 57.6 kbps
- Slim-line enclosure is designed for desktop, wallmount, or rackmount in the ADTRAN RM10AC rackmount chassis
- Internal power supply
- Can be used for point-to-point, multi-point, or Frame Relay applications
- Easy to configure; all options set by easily accessible DIP switches
- Multiple test and diagnostic features
- Industry-leading five-year North American warranty

The ADTRAN® DSU 56/64™ and DSU 5600™ provide cost-effective solutions for termination of 56 or 64 kbps DDS services. The units are a very economical solution for single port point-to-point, multi-point or Frame Relay applications. Extensive use of VLSI technology provides a highly reliable feature-rich DSU. The enclosure for both the DSU 56/64 and DSU 5600 is a small, attractive, slim-line package that is wallmountable, rack-mountable or can sit on a desktop.

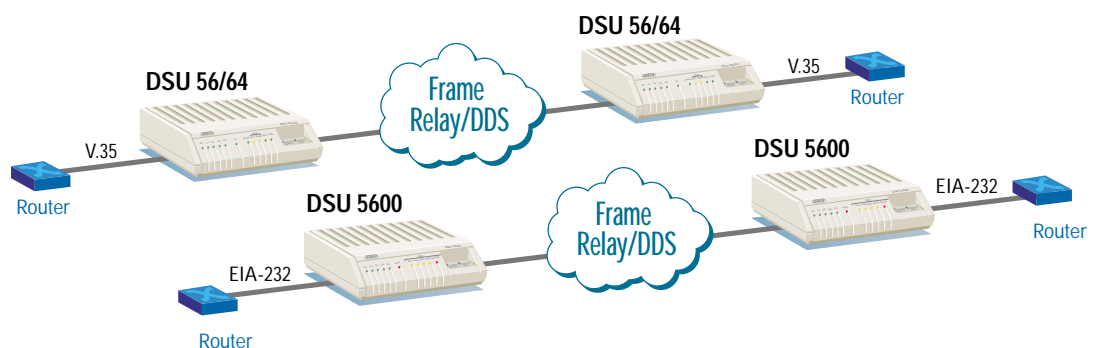
The DSU 56/64 provides both a physical and electrical V.35 DTE interface, which is mounted on the rear panel. The DTE interface operates at the same rate as the network, either 56 or 64 kbps. Also located on the rear panel is a set of option DIP switches along with an RJ-48S network interface. The option switches allow the user to select the network/DTE data rate, control lead options, remote digital loopback, and scrambler options.

The DSU 5600 provides both a physical and electrical EIA-232 DTE interface, which is mounted on the rear panel. The network interface operates at either 56 or 64 kbps. The DTE interface operates either at 56 or 64 kbps

synchronous or 1.2 to 57.6 kbps asynchronous. Also located on the rear panel are option switches along with an RJ-48S network interface. The option switches allow the user to select the rate of operation, control lead options, remote digital loopback, and scrambler options.

Both units respond to standard loopback commands from the service provider. In addition, the units have built-in test capabilities which include V.54 remote loopback, DTE, DTE and loop, DTE with test pattern, and loop only. Included with the remote loopback is the capability to select a 2047 BERT test pattern, with results displayed on the front panel.

The front panel of the DSU 56/64 and DSU 5600 provide a set of 11 LED indicators. Five of the indicators show the status of the V.35 DTE or EIA-232 interface while the remaining LEDs indicate the various test modes and loop status. Two front panel keys allow the user to select one of the several test mode the unit supports.





ADTRAN, Inc.

Attn: Enterprise Networks  
901 Explorer Boulevard  
Huntsville, AL 35806

P.O. Box 140000  
Huntsville, AL 35814-4000

256 963-8000 voice  
256 963-8699 fax  
256 963-8200 fax back

**General Information**  
800 9ADTRAN  
info@adtran.com  
www.adtran.com

**Pre-Sales**

**Technical Support**

800 615-1176 toll-free  
application.engineer@adtran.com  
www.adtran.com/support

**Where to Buy**

877 280-8416 toll-free  
channel.sales@adtran.com  
www.adtran.com/where2buy

**Post-Sales**

**Technical Support**

888 423-8726  
support@adtran.com  
www.adtran.com/support

**ACES Installation & Maintenance Service**

888 874-ACES  
aces@adtran.com  
www.adtran.com/support

**International Inquiries**

256 963 8000 voice  
256 963-6300 fax  
international@adtran.com  
www.adtran.com/international

**For the regional office nearest you, visit:**

www.adtran.com/where2buy



ADTRAN is an ISO 9001: 2000 certified supplier.



ADTRAN is a TL 9000 3.0 certified supplier.

61200062L1-8H April 2003  
Copyright © 2004 ADTRAN, Inc.  
All rights reserved.

# DSU 56/64 and DSU 5600

## DDS CSU/DSU

## Product Specifications

### Operating Modes

- Dedicated DDS
- Point-to-point
- Multi-point

### Network Rates

- 56/64 kbps

### Indicators

#### Status

- RS, CS, TD, RD, CD, & ALM

#### Test

- DTE, LOOP, RDL, PTRN, & ERROR

### Options

- Set by DIP switch
- **Loop Rate:** 56 or 64 kbps
- **CTS:** On or Normal
- **CTS Delay:** Short or Long (DSU 56/64)
- **CD:** On or Normal
- **DSR:** On or Normal
- **Scrambler:** On or Off
- **Anti-Stream:** On or Off (DSU 56/64)
- **RDL:** Enable or Disable

### DTE Rates

- **DSU 56/64:** V.35 physical and electrical
- **DSU 5600:** EIA-232 physical and electrical

### Diagnostics

#### Local

- DTE, DTE/Loop, DTE with test pattern, Loop only, test pattern

#### Remote

- V.54 with or without 2047 test pattern

### Line Requirements

- **Loop transmission parameters as defined in:**  
AT&T PUB 62310: Dedicated DDS

### Line Interface

- RJ-48S

### Receiver Sensitivity

- -45dB at all rates

### Agency Approvals

- FCC Part 15 Class A
- FCC Part 68
- UL and CUL
- Industry Canada CS03

### Environment

#### Operating Temperature

- 0°C to 50°C (32°F to 122°F)

#### Storage Temperature

- -20°C to 70°C (-4°F to 158°F)

#### Relative Humidity

- Up to 95% non-condensing

### Physical

#### Dimensions

- 1.625" H, 6.50" W, 8.25" D

#### Weight

- 1.5 lbs

#### Power

- 115 VAC, 60 Hz, 4 W

### Products Include

- 8-pin to 8-pin modular cable
- User manual

## Ordering Information

Equipment	Part #
DSU 56/64	1200062L1
DSU 5600	1200078L1
RM 10 AC Shelf	1200085L1
Low Profile 19" Tray	1200468L1



Specifications subject to change without notice. DSU 56/64 and DSU 5600 are trademarks of ADTRAN, Inc. ADTRAN is a registered trademark of ADTRAN, Inc. All registered trademarks and trademarks mentioned in this publication are the property of their respective owners.